

metruís

21 CORK STREET

MAYFAIR

EXCEPTIONAL OFFICE SPACE IN THE HEART OF MAYFAIR



SOMEWHERE TO EAT

With an abundance of high end luxury restaurants on your doorstep you're spoilt for choice, including Cecconi's, Sexy Fish, The Wolseley and Amazonica.



SOMEWHERE TO WALK AND RELAX

Just a 5-minute walk from Green Park, the perfect spot to go for a walk and have lunch.



SOMEWHERE TO TRAVEL

Superb travel links with easy access to the Victoria, Piccadilly, Jubilee, Bakerloo, Central lines and brand-new Elizabeth Line through a short walk to Green Park, Oxford Circus, Bond Street and Piccadilly Circus.



SOMEWHERE TO DO SOMETHING DIFFERENT

Why not explore everything Mayfair has to offer? From high end dining and shopping to world famous art galleries.



DRINKS

The Burlington Arms
Coach & Horses Mayfair
Goat Tavern Mayfair
Windmill
HON Bar
The Starman

BEAUTY & WELLBEING

Nails Mayfair
Dr Nyla Medispa
The Skin Lab - Augustinus Bader
Gentlemen's Tonic
The Barber Shop
Pankhurst London
Lanserhof Gym at The Arts Club

MEDICAL

London Doctors Clinic
Medicspot Clinic Grosvenor Square
Mayfair Medical Centre

SHOPPING

Burlington Arcade
Ralph Lauren
Chanel
Hermes
Dior

HOTELS

1 Hotel Mayfair
The Ritz
Claridge's
The Connaught
Browns Hotel

MEMBERS CLUBS

Apollo's Muse
Upstairs at Langan's
The Twenty Two
Maison Estelle
Nikita
Allbright Mayfair
The Savile Club

COFFEE

Ralph's Coffee at Bond Street
Starbucks Coffee
Noxy Brothers
Le Petit Café
Morris's Café

FOOD

Novikov
Sexy Fish
Bacchanalia
Cecconis
Sketch
Gaucho

LOCAL OCCUPIERS

HSBC
Redfern Gallery
BeIN Sports
Royal Academy of Arts
Goodman Gallery
TCI Fund Management
Stephen Friedman Gallery

DRINKS

The Burlington Arms
Coach & Horses Mayfair
Goat Tavern Mayfair
Windmill
HON Bar
The Starman

MEMBERS CLUBS

Apollo's Muse
Upstairs at Langan's
The Twenty Two
Maison Estelle
Nikita
Allbright Mayfair
The Savile Club

FOOD

Novikov
Sexy Fish
Bacchanalia
Cecconis
Sketch
Gaucho

SHOPPING

Burlington Arcade
Ralph Lauren
Chanel
Hermes
Dior

HOTELS

1 Hotel Mayfair
The Ritz
Claridge's
The Connaught
Browns Hotel

COFFEE

Ralph's Coffee at Bond Street
Starbucks Coffee
Noxy Brothers
Le Petit Café
Morris's Café

BEAUTY & WELLBEING

Nails Mayfair
Dr Nyla Medispa
The Skin Lab - Augustinus Bader
Gentlemen's Tonic
The Barber Shop
Pankhurst London
Lanserhof Gym at The Arts Club

MEDICAL

London Doctors Clinic
Medicspot Clinic Grosvenor Square
Mayfair Medical Centre

ACCOMMODATION

The property is located in the heart of Mayfair within close proximity of both St James & Soho. Surrounded by world class amenities the accommodation benefits from a variety of restaurants, luxury shops, hotels and private members clubs

The accommodation boasts impressive floor to ceiling heights, exceptional natural light from both front and rear

LEASE TERMS

A new flexible lease is available for a term by arrangement. The lease will be granted outside the Security of Tenure and Compensation Provisions provided by the Landlord & Tenant Act 1954 Part II, as amended

TIMING

Available for immediate occupation

EPC

EPC available upon request

CONNECTIVITY

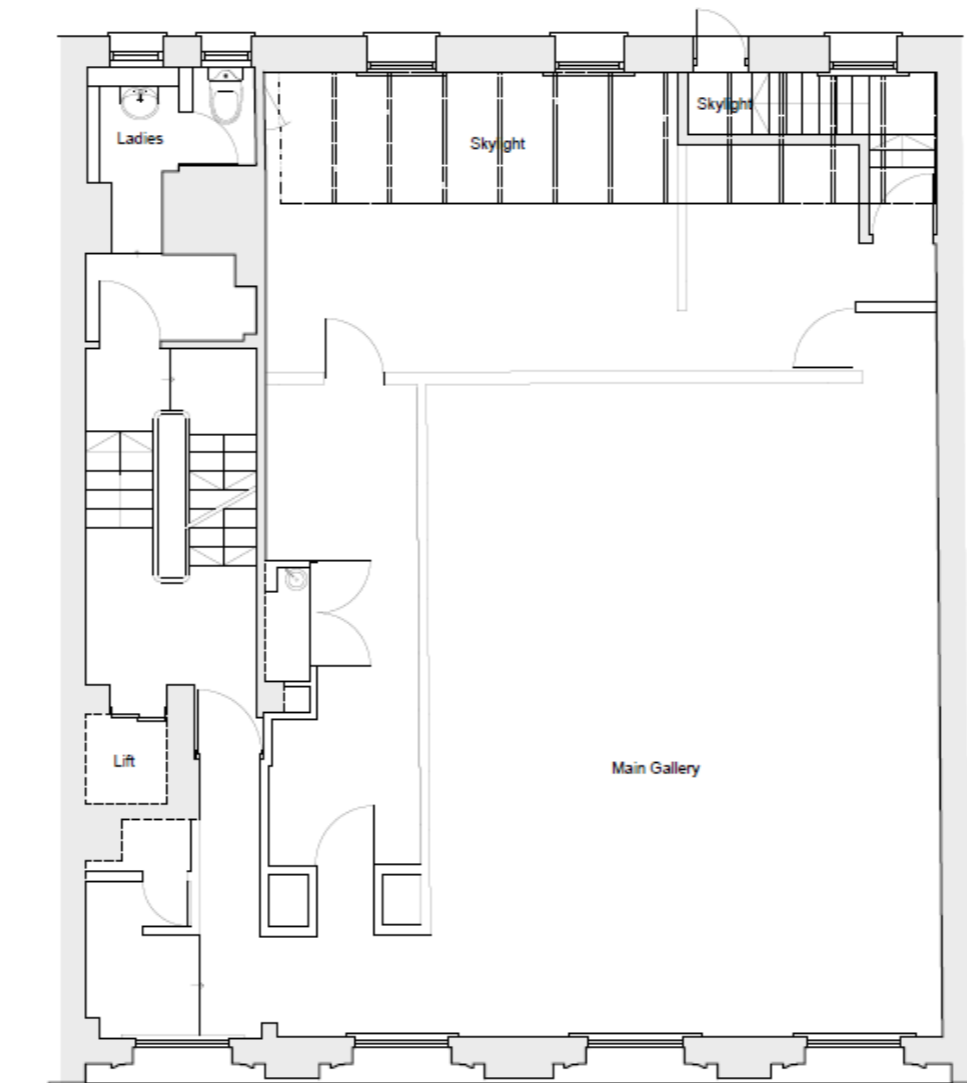
Green Park - 0.3 mi
Piccadilly Circus - 0.4 mi
Oxford Circus - 0.4 mi
Bond Street - 0.5mi
Charing Cross Commuter Rail - 0.9mi

FEATURES

- Floor to ceiling height windows
- Great natural light
- Air-conditioning
- Lift
- Suitable for gallery
- Great location
- 24 hour access

First Floor Plan

21 Cork St, London W1S 3LZ



Cork Street

ACCOMMODATION SCHEDULE

Floor	Size (Sq Ft)	Size (Sq M)	Guiding Rent (Per Annum Exclusive)	Estimated Rates (PSF)	Service Charge (PSF)
1st	1,243	116	Upon Application	23.77	18.40

- All sizes NIA (Net Internal Area)
- Interested parties should verify the rates payable with the relevant Local Authority



CONTACT

www.metrus.co.uk

020 7079 3976

agencygroup@metrus.co.uk

Colin Becker

020 7079 3994

cb@metrus.co.uk

Oliver Becker

020 7079 3974

ob@metrus.co.uk

Harrison Berger

020 7079 2500

hb@metrus.co.uk

Simon Stone

020 7079 3981

Simon.stone@metrus.co.uk

Disclaimer: Metrus Limited for themselves and for the Vendors or Lessors of this property whose agents they are give notice that: all descriptions, dimensions, reference to condition and necessary permissions for use and occupation and other details are unless otherwise stated indicative only. Any intending purchasers or tenants should not rely on them as statements or representations of fact or as warranties but must satisfy themselves by inspection or otherwise as to the correctness of each of them. Any services mentioned have not been tested and therefore prospective occupiers should satisfy themselves as to their operation. These particulars are produced in good faith and set out a general guide only and do not constitute part of any offer or contract. No person in the employment of Metrus Limited has any authority to make or give representation or warranty in relation to this property. All prices and rents are quotes exclusive of VAT unless otherwise stated.